

Effects of Precious Metal Doping on Stainless Steels Produced by Spark Plasma Sintering

N. Sweeney Fort^a, R. Thackray^a, H. Hamilton^b, G. Thornton^c

^a Department of Materials Science and Engineering, University of Sheffield, UK, ^b Johnson Matthey Technology Centre, Sonning Common, UK, ^c LIBERTY Powder Metals, Middlesbrough, UK

Introduction

- Stainless steels (SS) demonstrate poor corrosion resistance in reducing acidic environments
- Literature shows that the corrosion resistance of SS can be improved by coating and bulk alloying with precious metals. Due to high costs, these methods are not commercially viable
- This project aims to produce functionally graded (FG) 316L and 17-4PH SS doped with Pd and Ru by spark plasma sintering (SPS), reducing the amount of precious metals used and reducing costs
- The microstructure and corrosion and mechanical performance of the FG material will then be investigated

Spark Plasma Sintering Process

- SPS is a powder processing method
- SS powders were loaded into a graphite die and placed in a vacuum chamber
- A uniaxial pressure and pulsed DC were applied to the powder. By the Joule effect the powder was heated and held at the sintering temperature

- As the most influential parameter, sintering temperature was varied to optimise sample porosity, density and hardness

Table 1. SPS parameters

Sintering Temperature (°C)	1000-1100
Sintering Rate (°C/minute)	100
Holding Time (s)	600
Applied Load (kN)	16

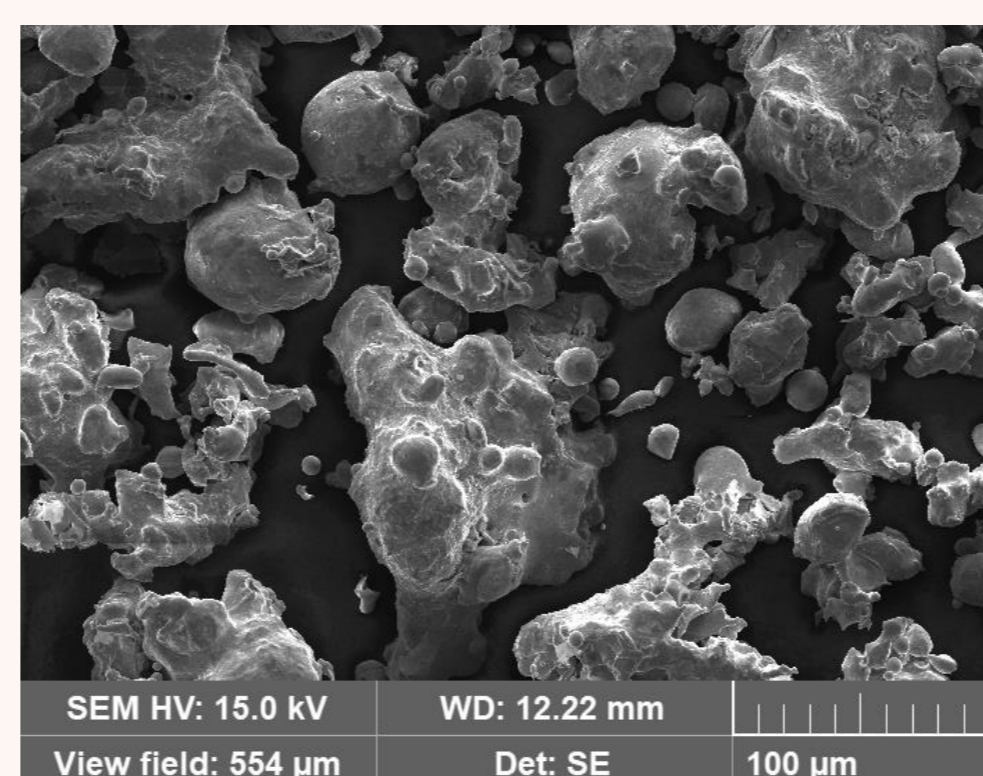


Figure 1. 316L with Pd powder

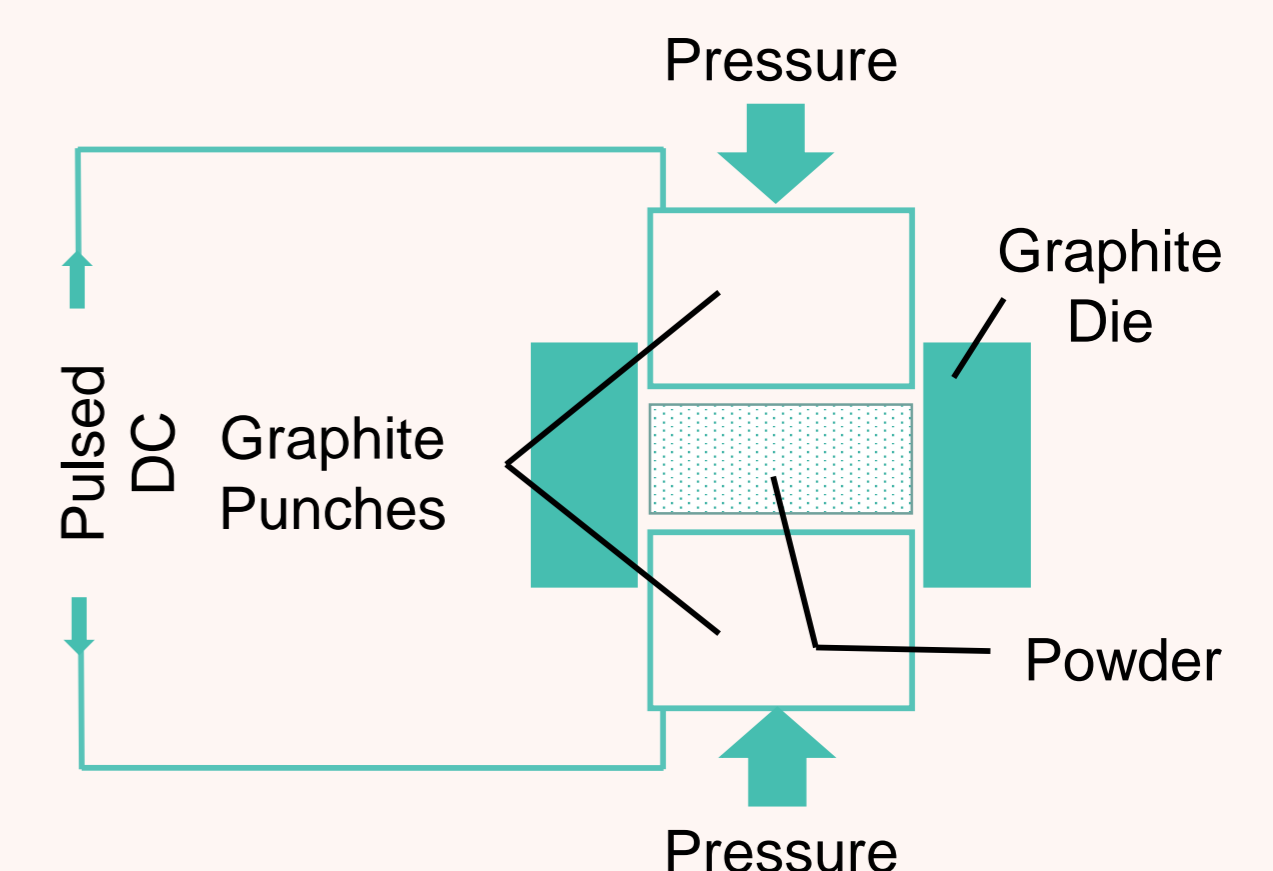


Figure 2. SPS diagram

Sample Hardness and Density

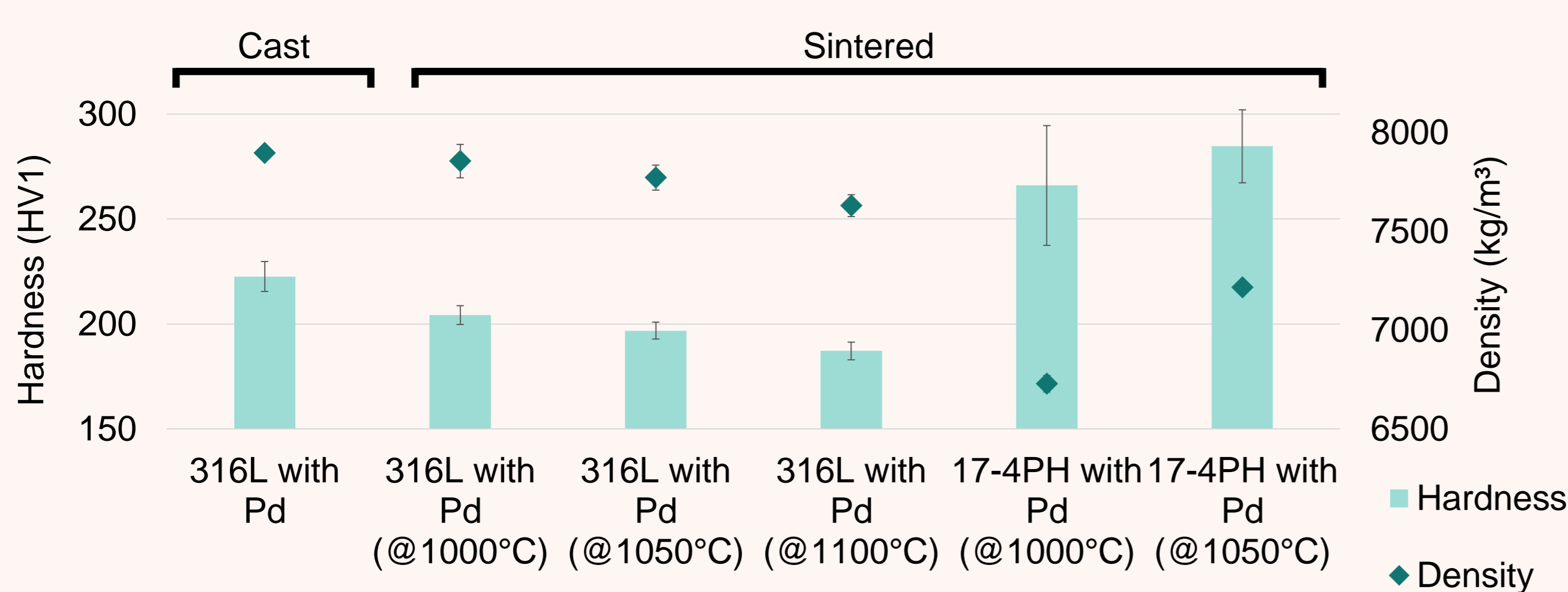


Figure 3. Graph of cast and sintered sample hardness and density

Porosity

- Preliminary pore analysis was achieved on optical micrographs using ImageJ

Table 2. Mean pore size at different sintering temperatures

Sample	Sintering Temperature (°C)	Mean Pore Size (µm²)
316L with Pd	1000	3.127 ±0.364
	1050	3.960 ±0.589
	1100	2.823 ±0.570
17-4PH with Pd	1000	9.025 ±2.174
	1050	6.460 ±3.637

Summary and Future Work

- Increasing sintering temperature improves hardness and density of 17-4PH samples but the opposite is true for 316L samples. Analysis of grain size will be used to assess whether grain growth is responsible for this trend
- Mean pore size decreases with sintering temperature for 17-4PH samples while it increases then decreases for 316L samples. The large error of these results means they are inconclusive, hence porosity will be further investigated by mercury porosimetry
- After suitable sintering parameters have been identified, FG samples will be fabricated
- Microstructural characterisation using scanning electron microscopy will be carried out followed by corrosion testing to analyse the effects of precious metal doping